

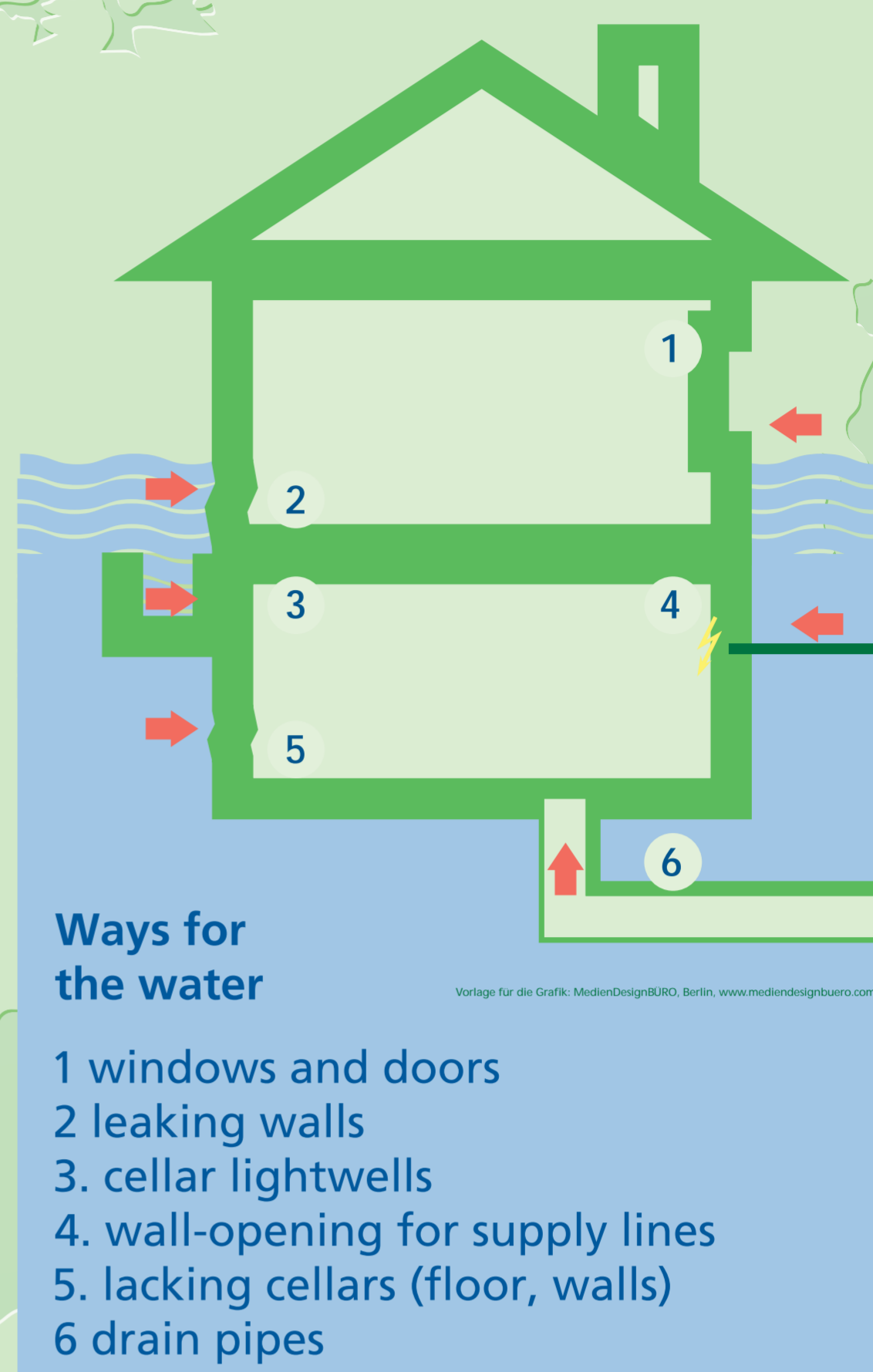
Built at the water

How can you protect your house through precautionary measures?

Building precautions – Ideally, you should build your house in a place where the water cannot reach it. If you already live in an area that is at risk of flooding, you can take structural measures to protect yourself:

Dams and retaining walls can keep water away from the property; close and seal any openings that could let water into the house.

But be aware: If the outside water level is too high and groundwater is exerting pressure from underneath, this may endanger the stability of your house – so consult an expert!

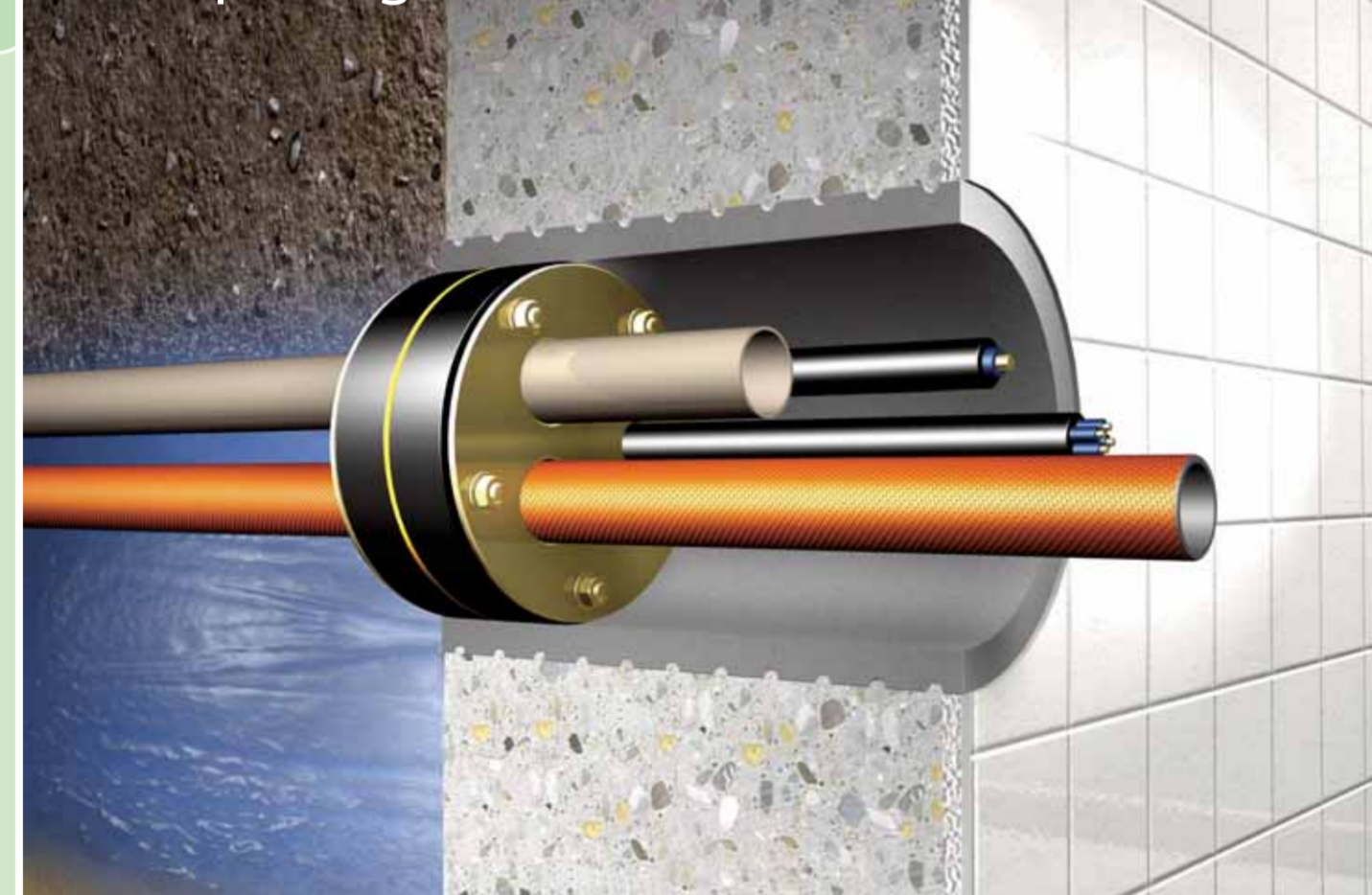


Sealed basement windows



If you want to prevent water from entering your house, start by sealing the windows and doors. If simply protecting them with sandbags is not enough, you can install customized technical systems that will resist even high water pressure.

Water-pressure-resistant wall openings



However, water does not just get in through windows and doors. Anywhere supply lines come into the house, there are wall openings that must be secured. Walls and joints can let in water if they are not properly sealed. Pay special attention to drainage pipes! If the outside water level is rising, it will push water into the house through the drainage system. The only remedy is to install check valves, which prevent wastewater from flowing back in.

Unsecured installations



If the house nonetheless needs to be flooded due to high water pressure, this should be done in a controlled way, with clean water. It goes without saying that water-sensitive materials, valuable fixtures and technical systems do not belong on the lower levels of the house. In addition, electrical installations should be flood-proofed and have a separate off switch.

Despite these precautions, residual risks will remain.

Make sure you are insured against flooding, and set aside financial reserves.

Extensive information can be found in the brochure “Living with floods,” which was published as part of the OderRegio project (available online at www.oderregio.org), and the „Hochwasserschutzbibel“ issued by the Federal Ministry of Transport, Building and Urban Development (available online at www.bbsr.bund.de).

Sources:

- Joint Spatial Planning in Berlin-Brandenburg (Ed.) (2005), OderRegio Brochure 1, Potsdam
- Federal Ministry of Transport, Building and Urban Development (Ed.) (2010), Flood control primer, 3. Supplemented and revised edition, Berlin

Editor:

- INFRASTRUKTUR & UMWELT, Professor Böhm und Partner, Darmstadt / Potsdam

Lead partner / Contact:
Sächsisches Staatsministerium des Innern
Referat 45 – Europäische Raumordnung, Regionalentwicklung
Fon: +49 (0)351-564 3456 / Fax: +49 (0)351-564 3459
mailto: regionalentwicklung-eu@smi.sachsen.de / www.label-eu.eu

