

## CONTENT

Kick-Off Conference Magdeburg	1
Pilot actions overview	2
Pilot action 2: Implementation of the EU directive on the assessment and management of flood risks	3
Pilot actions 6 and 7: Regional flood protection measures	3
Pilot action 12: Risk prevention and water tourism	3
LABEL at a glance	4
Contact	4

## EVENTS

19./20.01.2010

WG COMM meeting,  
Dresden, Germany

20.01.2010

Steering Group meeting,  
Dresden, Germany

16./17.03.2010

WG STRAT/ADAPT meeting,  
Dresden, Germany

21./22.04.2010

WG RISK meeting, Erfurt,  
Germany



### ELBE-LABE - Adaptation to flood risk in the Elbe river basin

ELBE-LABE - Anpassung an das Hochwasserrisiko im Elbeeinzugsgebiet

LABE-ELBE - Adaptace na povodňové riziko v povodí Labe

## Project inaugurated in Magdeburg

**The Kick-Off Conference of the LABEL Project took place during 22 to 24 April 2009 under the heading "Tensions between flood, economy and tourism in the catchment area of the Elbe / Labe".**

*Presentation of the pilot study Orlicko at the Kick-Off Event*



With the Saxony-Anhalt State Secretary for Transport and Regional Development Mr André Schröder and the head of department spatial planning in Saxony, Dr. Frank Pfeil the project was launched. They welcomed the project partners and guests in the Gesellschaftshaus in Magdeburg. The LABEL Kick-Off conference was mainly aimed to provide an overview on the activities and strategies on flood protection, economic development and tourism in the different project areas. In addition to the discussion of ongoing and future projects, particularly the conflicts between the different demands on the river basins were of interest.



*Auditorium in Magdeburg, Germany*

The presentations from Germany, the Czech Republic, Austria and Hungary provided a good basis for discussion within the project. The raised issues were discussed at the second conference day in the first working group meetings. Furthermore, the work orders for the project partners were reviewed and agreed upon.

Another block of the conference was devoted to the current concerns of the project and programme management regarding the project partners during the initial phase of the project. The duties of the partners were explained and matters clarified.

On the third day of the conference the project partners were able to experience the conflict of uses at the Elbe and solutions for the Magdeburg area. On a Field Trip the project partners visited the water bridge near Magdeburg.

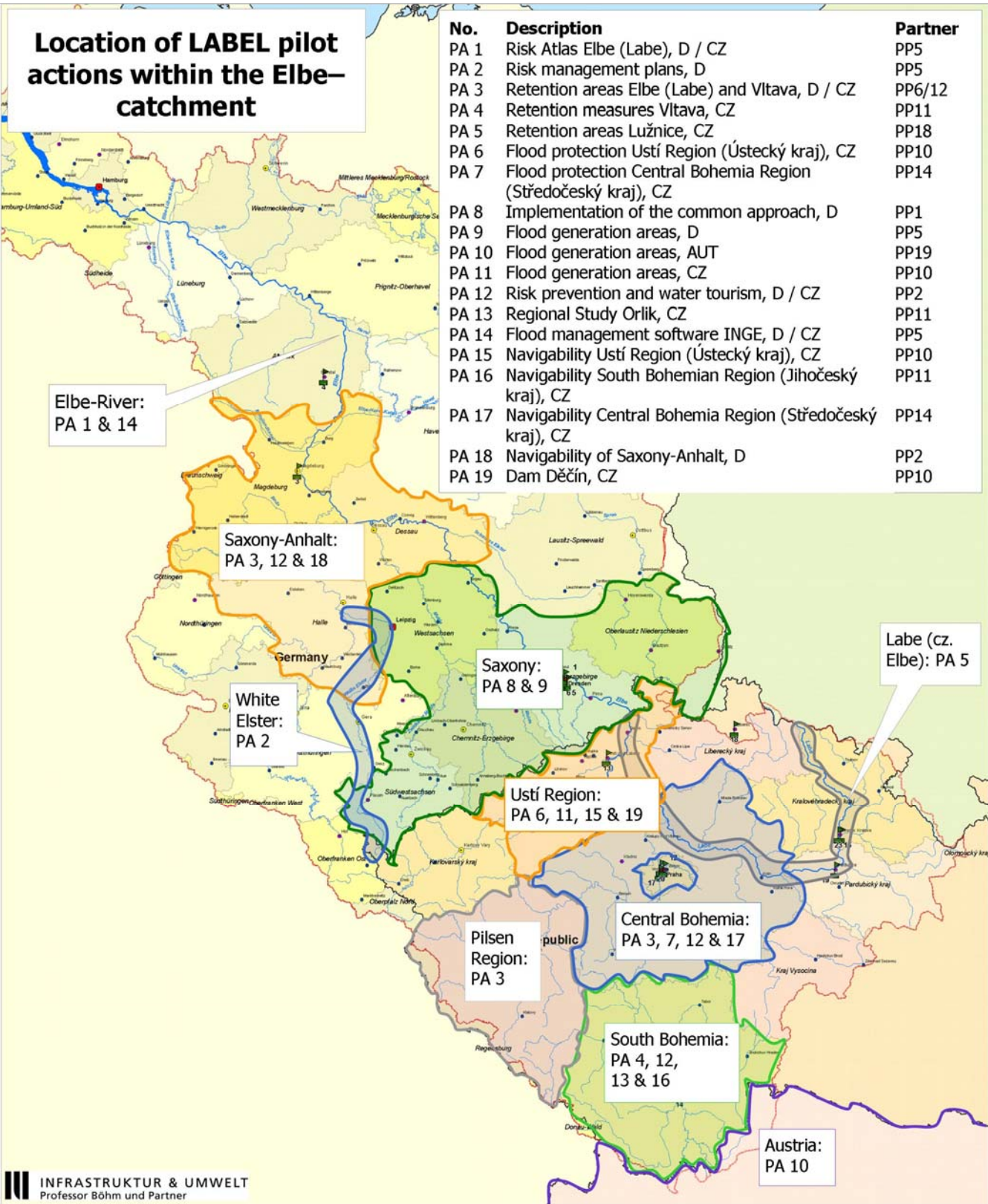


*Excursion to the Magdeburg water bridge, Germany*

# Pilot actions overview

In this and the next issues, the LABEL-Journal will offer an overview over the 19 pilot actions (PA) in LABEL, which are regionally limited and cover various topics.

The common approaches will be implemented in different exemplary regions. These activities reach from the level of countries / regions and river basin level to local activities.





## Pilot action 2: Implementation of the EU directive on the assessment and management of flood risks

Since the entry into force of the EU directive on the assessment and management of flood risks, new fields of action in the context of flood protection arose. Three steps are given:

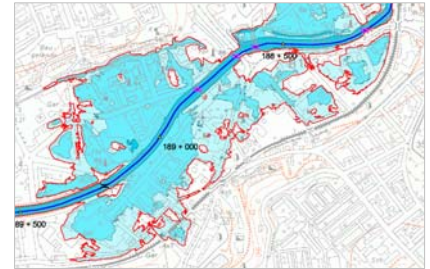
- Preliminary flood risk assessment
- Development of flood hazard and flood risk maps
- Preparation of flood risk management plans

In the pilot project, all three steps will be implemented for the exemplary project area, White Elster. The White Elster has its source in the Czech Republic and flows through Saxony and Thuringia to Saxony-Anhalt. A collaboration of the named countries is therefore necessary to meet the requirements of the EU Directive. A consideration of the Czech part of the catchment is not necessary because there is no significant flood risk. After an initial kick-off meeting of the participating (German) countries on 16.09.2009 in Leipzig, substantive issues are discussed. In addition to an intensive exchange of experience, tailored risk maps, hazard maps and a flood risk management plan prepared for the entire German catchment area of the White Elster River will be the result. The knowledge gained in the project findings will be incorporated into the LABEL recommendations for the creation of risk maps and management plans. It will also contribute to the transnational coordination of the procedure for implementing the EU directive.

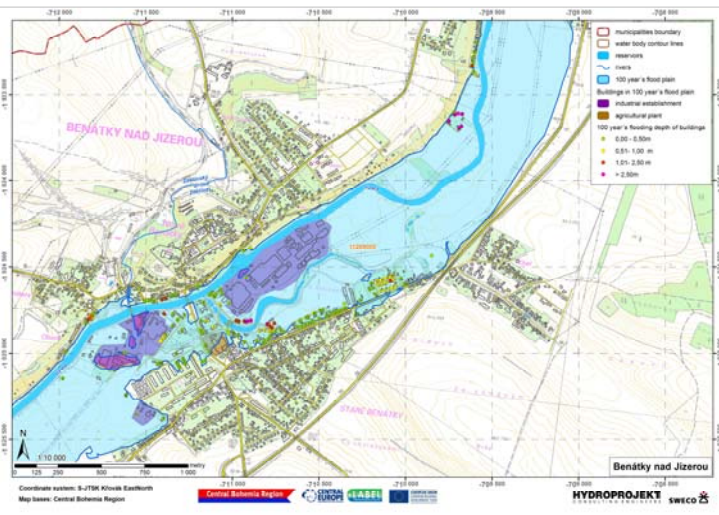
*Responsible Partner: Saxon State Agency for Environment, Agriculture and Geology, LfULG*



*White Elster, Plauen (Saxony, Germany); © LfULG*



*Part of a flood hazard map of Plauen according Saxon conception; © LfULG*



## Pilot actions 6 and 7: Regional flood protection measures

### In the Central Bohemian Region

The concept of flood protection measures in Central Bohemia evaluates the current protection situation in relation to the physical conditions of the region. The pilot action assesses the level of protection of today's settlements along the main water bodies, it identifies weaknesses and sets goals for flood protection. Finally, proposals for the implementation of concrete protection measures are given to improve flood protection in the Region actively.

*Responsible Partner: Central Bohemian Region (Středočeský kraj)*

### In the Ústí Region

The pilot action prepares all necessary steps to protect the small community Chodouny-Lounky of a 100-year flood. Located in a small depression, the town stands on the right bank of the Elbe between the cities Roudnice nad Labem and Litoměřice. It was hit by flooding several times in recent years. In the northern part of the town a concrete wall is planned to be reinforced and in the southern part a dam and another reinforced concrete wall are planned. The protection will be complemented by mobile protection elements.

*Flood hazard map of Benátky nad Jizerou (CZ) © Central Bohemian Region (Středočeský kraj)*

concrete wall is planned to be reinforced and in the southern part a dam and another reinforced concrete wall are planned. The protection will be complemented by mobile protection elements.

*Responsible Partner: Ústí Region (Ústecký kraj)*

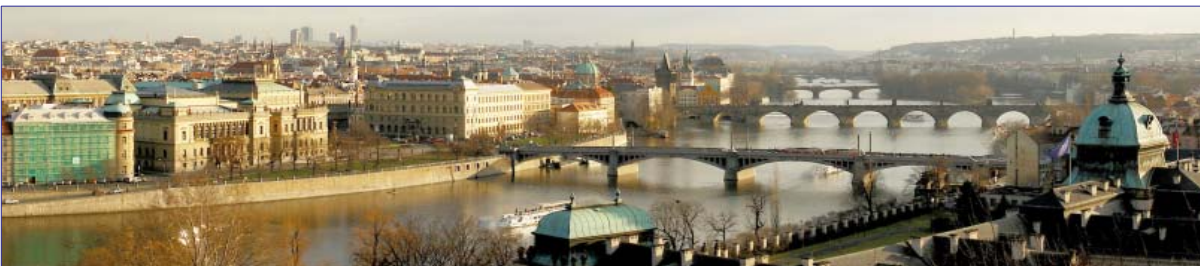
## Pilot action 12: Risk prevention and water tourism

Saxony-Anhalt has positioned itself for several years in the field of water tourism with the "Blue Band" ([www.blauesband.de](http://www.blauesband.de)). In cooperation with the Ministry of Economy Saxony-Anhalt the pilot action identifies measures to stimulate the Blue Band and adapt it to flood risk. The focus of the evaluation will therefore lie on tourism marketing and strategy development. A close cooperation with Czech partners will be pursued, as relevant results from different regional studies will feed into supra-regional strategies and actions. First synergies were already identified: German water tourism suppliers named the lack of tourism infrastructure in the Czech Republic as an obstacle to a better cross-border water tourism; LABEL will counteract this matter. In their pilot studies the Regions of Southern and Central Bohemia will focus on the development of flood risk adapted infrastructure and opportunities for boosting tourism, e.g. through risk-adapted anchorages. Thus, good opportunities exist to strengthen regional cooperation through the risk-adapted water tourism.

*Responsible Partner: Ministry of Regional Development and Transport, Saxony-Anhalt, MLV*



*Water tourism at the Elbe, Saxony-Anhalt (D) © MLV*



## LABEL at a glance

### Lead Partner:

Saxon State Ministry of the Interior

### Duration:

09/2008 – 02/2012

### Total budget:

4.275.680 €

### thereof:

ERDF (EU-funding):  
3.364.526 €

National co-financing:  
911.154 €

## CONTACT

### Saxon State Ministry of the Interior

Wilhelm-Buck-Str. 2  
D-01095 Dresden

Dr. Fritz Schnabel  
Dipl.-Dipl.-Ing. Janka Beltschewa  
Dipl.-Ing. Andreas Kühl

Tel.: +49 (0)351 / 564-3456  
Fax: +49 (0)351 / 564-3459  
Mail: fachplanung-eu@smi.sachsen.de

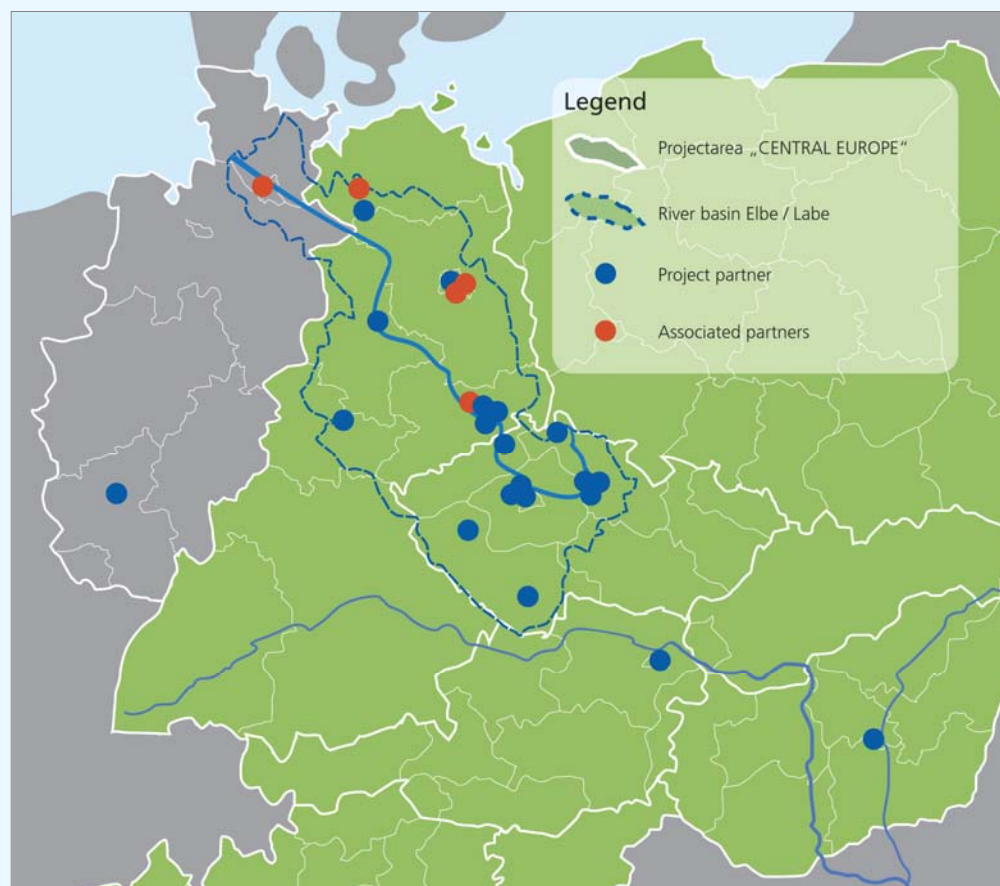
### External Coordination:

INFRASTRUKTUR & UMWELT  
Professor Böhm und Partner  
Julius-Reiber-Str. 17  
D-64293 Darmstadt

Dr. Peter Heiland  
Dipl.-Ing. Uwe Seibel  
Dipl.-Geogr. Stefanie Greis

Tel.: +49 (0)6151 / 8130-0  
Fax: +49 (0)6151 / 8130-20  
Mail: label@iu-info.de

## The LABEL Project partnership



### Project partner

#### Germany

**Lead Partner** / PP 1: Saxon State Ministry of the Interior

- PP 2: Ministry of State Development and Transport, Saxony-Anhalt
- PP 3: Thuringian Ministry of Agriculture, Forestry, Environment and Nature Preservation
- PP 4: Saxon State Ministry of the Environment and Agriculture
- PP 5: Saxon State Office for the Environment, Agriculture and Geology
- PP 6: Ludwigslust County
- PP 7: German Federal Institute for Hydrology
- PP 8: Association for Housing, Urban and Spatial Development e.V.

#### Czech Republic

- PP 9: Ministry of the Environment, Czech Republic
- PP 10: Ústi Region
- PP 11: Region of South Bohemia
- PP 12: Pilsen Region
- PP 13: Hradec Králové Region
- PP 14: Central Bohemia Region
- PP 15: Liberec Region
- PP 16: Pardubice Region
- PP 17: Elbe River Basin Authority
- PP 18: Vltava River Basin Authority

#### Austria

- PP 19: Federal Ministry of Agriculture, Forestry, Environment and Water Management

#### Hungary

- PP 20: Middle-Tisza district Environment and Water Directorate