

CONTENT

Influence of important flood retention measures on the Elbe flood in January 2011	1
Study trip from the Tisza to the Elbe	2
Tourist traffic and flood protection in South Bohemia	2
Climate change and flood risk: Adaptation in the Elbe catchment	3
Elbe-Atlas II	3
Films and articles about LABEL on behalf of the EU Commission	3
LABEL - Headlines	4
LABEL at a glance	4
Contact	4

Events

17.11.2011

Transnational cooperation in practise, politics workshop in Berlin, DE

January 2012

First meeting of the LABEL editor's group in Dresden, DE

09.-10.05.2012

Final conference of the project LABEL in Dresden, DE



ELBE-LABE - Adaptation to flood risk in the Elbe river basin

ELBE-LABE - Anpassung an das Hochwasserrisiko im Elbeeinzugsgebiet

LABE-ELBE - Adaptace na povodňové riziko v povodí Labe

Influence of important flood retention measures on the Elbe flood in January 2011

In the Saale river catchment (DE) as well as in the catchments of river Vltava and river Ohře (CZ) several dams and retention areas exist, that played an important role for reducing the flood peaks during the past flood events.

The German Federal Institute for Hydrology analysed in cooperation with the Masaryk Water Research Institute and AquaLogic Consulting the effect of Czech (on river Vltava and Ohře) and Thuringian retention measures on extreme flood events at the Elbe. The analyses show that during the flood 2011 the measures at Vltava and Ohře as well as the control of dams at the Saale caused reduced flood water levels all along the German Elbe. The average reductions are between 1.04 m at the gauge Usti nad Labem and 33 cm at the gauge Wittenberg. Hence, it could be significantly contributed to the reduction of flood risks. The results also show: All measures that have a positive impact on the Czech

Elbe catchment are also beneficial for the German catchment area: Even at the gauge Neu-Darchau (about 540 km below the Czech-German border) the flood 2011 was reduced from a 50-yearly event to a 25-yearly event.

Table: Modelled water level reductions; the blue column shows the water level reductions by all Czech measures and at the River Saale © BfG

Elbe-km	Gauge	Water level reduction by Czech measures	Water level reduction by measures at the Saale	Water level reduction by all measures
		[cm]	[cm]	[cm]
-37.4	Usti	- 104	0	- 104
2.1	Schöna	- 110	0	- 110
55.6	Dresden	- 68	0	- 68
154.6	Torgau	- 57	0	- 57
214.1	Wittenberg	- 33	0	- 33
274.8	Aken	- 39	- 1	- 40
295.5	Barby	- 28	- 11	- 34
388.2	Tangermünde	- 29	- 9	- 37
454.8	Wittenberge	- 33	- 9	- 40
536.4	Neu Darchau	- 33	- 9	- 40

Responsible Partners:

German Federal Institute for Hydrology, BfG, DE; Masaryk Water Research Institute, VUV, CZ; AquaLogic Consulting, CZ; Thuringian ministry for agriculture, forestry, environment and nature protection, TMLFUN, DE

Study trip from the Tisza to the Elbe

A small group of experts led by Attila Lovas, Director of the Middle-Tisza Water Directorate, Hungary and project partner in LABEL visited the Elbe: The study trip focused on the exchange of methods and best-practice examples for flood risk management. From August 8th to August 11th 2011, several interesting places were visited where the Czech and German project partners presented their daily work and the LABEL activities.

The experts travelled from Hungary to the Czech city Hradec Králové. From there the excursion stopped in Prague, Ústí nad Labem and at the final destination Dresden in Germany.



In Hradec Králové, discussions on flood risk management and a field trip to technical flood protection sites took place with the Elbe River Basin Authority (Povodí Labe). In Prague, an excursion showed the Hungarian delegation the city's flood protection efforts. Together with the project partner Region Usti (Ústecký kraj), further protection structures were visited along the Elbe. In Germany, the Hungarian experts were guests at the Saxon flood centre in Dresden to discuss the implementation of the flood risk management directive and to exchange about protective measures in flood generation areas of the Elbe.



Responsible Partners: Middle-Tisza Water Directorate, HU; Elbe River Basin Authority, CZ; Region Usti, CZ; Saxon State Office for Environment, Agriculture and Geology, DE

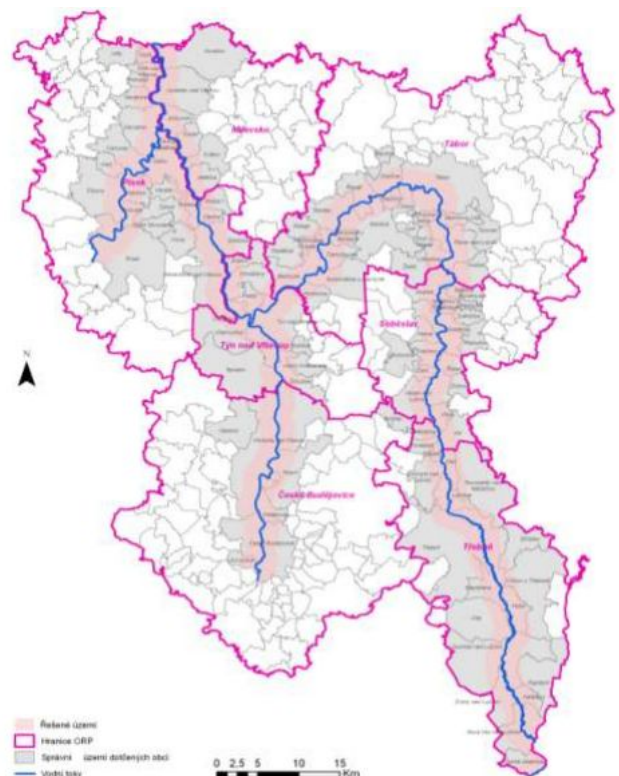
Tourist traffic and flood protection in South Bohemia

The Region South Bohemia has analysed potential locations for the development of water tourism and touristic navigation along the rivers Vltava, Otava and Lužnice.

The different locations were evaluated regarding their flood risk, their influence on the discharge in case of a potential flood, their traffic connection and connection to public infrastructure as well as concerning their attractiveness for tourist traffic in the region.

Most important result of the study is a catalogue about existing and potential touristic navigation infrastructure as well as camping sites or recreation centres. This catalogue puts together all relevant information on the different locations: equipment, touristic connections, traffic connections, legal aspects and flood risks.

Responsible Partner: Region South Bohemia, CZ



Map of the study area at the Rivers Vltava, Otava and Lužnice © Region South Bohemia

Climate change and flood risk: Adaptation in the Elbe catchment



Floods, as shown here in Dresden in January 2011, can become more frequent in future due to climate changes © A. Kühl

The impacts of climate change will also become apparent in the Elbe catchment: Due to climate changes, the future winters in the Elbe catchment will be mild and rainy more frequently, while the summers will be dryer on average. In addition, a general accumulation of extreme weather events, including heavy rain is forecasted. This suggests that the Elbe catchment will have to deal with more floods but also more low water situations in future. Against this background, flexible and sustainable solutions to adapt to the impacts of the current and future climate change are needed. In the affected sectors, such as water management, regional planning or tourism, both sector specific and cross-sector adaptation measures need to be implemented. Possible adaptation measures thereby range from the development of climate-adapted concepts, the change of usage in vulnerable areas to the implementation of structural changes.

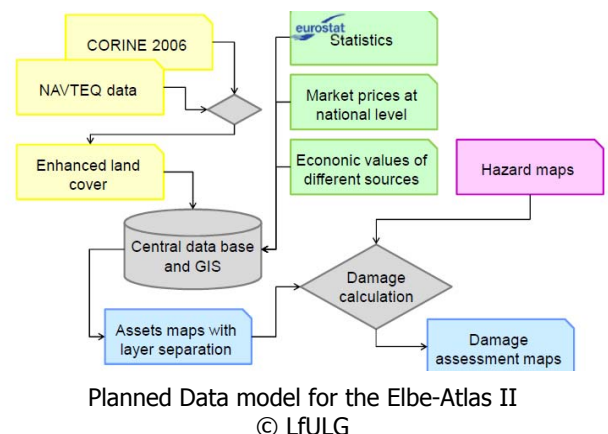
Suitable adaptation measures for the Elbe region are currently collected and evaluated systematically in a study.

Responsible Partner: Saxon State Ministry for Environment and Agriculture, SMUL, DE; INFRA-STRUKTUR & UMWELT, Prof. Böhm und Partner, DE

Elbe-Atlas II: Damage potential in the Elbe catchment

For the Elbe Atlas II the German States and the Czech Regions jointly create maps for damage assessment along the Elbe. For this, assets are determined Elbe catchment wide. Where there are water depth available of extreme floods at Labe and Elbe, damage potentials are calculated. These complement the existing maps of the first Elbe-Atlas. Furthermore, potentially hazardous sites are added on the maps and affected people in the flood area are displayed.

With the addition of risk maps to the existing Elbe Atlas I, important requirements of the EU-Flood risk management directive are met. Next to the experts benefit from the usage of the data from the Elbe-Atlas II, the important issue of raising awareness for flood protection in the Elbe catchment is accommodated.



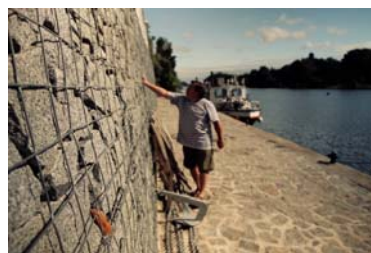
Responsible Partner: Saxon State Office for Environment, Agriculture and Geology, LfULG, DE

Films and articles about LABEL on behalf of the EU Commission

The EU Commission, Directorate General Regional Policy has chosen LABEL as exemplary INTERREG project for a new publication as well as an image film about European Territorial Cooperation.

The films can be watched here: www.label-eu.eu and www.label-eu.eu/download/other.html

The publication „European Territorial Cooperation: building bridges between people” is available for download here: http://ec.europa.eu/regional_policy/cooperate/cooperation/index_en.cfm



Pictures (f.l.t.r.): Elbe in Dresden, DE; Tynece marina, CZ; landing place at the Tynece marina, CZ; Uwe Restetzki, fire brigade Görnitz, DE; Andreas Kühl, SMI, DE © Tipik Communication Agency



LABEL - Headlines

LABEL will be extended!

The CENTRAL EUROPE programme secretariat preliminary agreed to an extension of the project duration of six months, until 31.08.2012.

LABEL editor's group founded

During the last partner meeting in Dresden an editor's group was founded, that should further develop the contents of the LABEL strategy and finalise it. The first meeting will take place in Dresden in the beginning of 2012.

Transnational cooperation in practise. Workshop in Berlin, 17.11.2011

A Workshop at the German Federal Ministry of Transport, Building and Urban Development presents the results from the project LABEL and ideas for further cooperation and joint work on the topic flood risk management. The following questions should be addressed on a round table together with decision makers and stakeholders: How can results be integrated into existing structures and be noticed by the respective persons? Which added value gives the transnational approach? And how can the INTERREG-Programme be further developed in a goal-oriented way?

LABEL at a glance

Lead Partner:

Saxon State Ministry of the Interior

Duration:

09/2008 – 02/2012 (08/2012)

Total budget:

4.275.680 €

thereof:

EFRE (EU-funding):
3.364.526 €

National co-financing:
911.154 €

www.label-eu.eu

CONTACT

Saxon State Ministry of the Interior:

Wilhelm-Buck-Str. 2
D-01095 Dresden

Dr. Fritz Schnabel
Dipl.-Ing. Andreas Kühl

Tel.: +49 (0)351 / 564-3456
Fax: +49 (0)351 / 564-3459
Mail: regionalentwicklung-eu@smi.sachsen.de

External Coordination:

INFRASTRUKTUR & UMWELT
Professor Böhm und Partner
Julius-Reiber-Str. 17
D-64293 Darmstadt

Dr. Peter Heiland
Dipl.-Geogr. Stefanie Greis

Tel.: +49 (0)6151 / 8130-0
Fax: +49 (0)6151 / 8130-20
Mail: label@iu-info.de

LABEL Partnership

Germany

Lead Partner: Saxon State Ministry of the Interior
PP 2: Ministry of State Development and Transport, Saxony-Anhalt

PP 3: Thuringian Ministry of Agriculture, Forestry, Environment and Nature Preservation

PP 4: Saxon State Ministry of the Environment and Agriculture

PP 5: Saxon State Office for Environment, Agriculture and Geology

PP 6: Ludwigslust County

PP 7: German Federal Institute for Hydrology

PP 8: Association for Housing, Urban and Spatial Development e.V.

Czech Republic

PP 9: Ministry of the Environment

PP 10: Ústí Region

PP 11: Region of South Bohemia

PP 12: Pilsen Region

PP 13: Hradec Králové Region

PP 14: Central Bohemia Region

PP 15: Liberec Region

PP 16: Pardubice Region

PP 17: Elbe River Basin Authority

PP 18: Vltava River Basin Authority

Austria

PP 19: Federal Ministry of Agriculture, Forestry, Environment and Water Management

Hungary

PP 20: Middle-Tisza district Environment and Water Directorate

