

CONTENT

| | |
|---|---|
| LABEL Final Conference | 1 |
| Pilot use of interactive hazard maps for municipal flood protection in Berga/Elster | 2 |
| Flood hazard and risk maps for river estuaries | 2 |
| Final working group meeting Hradec Kralove | 3 |
| Mathematical model for the simulation of hydrological conditions on the Elbe | 3 |
| Media contest on flood protection | 3 |
| LABEL – Headlines | 4 |
| LABEL Partnership | 4 |
| Contact | 4 |



ELBE-LABE - Adaptation to flood risk in the Elbe river basin

ELBE-LABE - Anpassung an das Hochwasserrisiko im Elbeeinzugsgebiet

LABE-ELBE - Adaptace na povodňové riziko v povodí Labe

All in the same boat! - 10 years of transnational cooperation in flood risk management at the LABE-ELbe

From 21-22 June 2012, the final LABEL conference will be held in the Saxon State Parliament in Dresden! The conference is also the first in a series of events that take place in the year of remembrance for the flood in 2002: Ten years since the devastating floods we would like to highlight several results from the transnational cooperation in the Elbe catchment. A new Elbe Atlas was devised, which provides comprehensive cross-border information on flood risks. The Elbe-Atlas will be presented to public at the conference. Moreover, we introduced the public to activities which are aimed at increasing the level of awareness, as far as flood risks are concerned. These included: the international LABEL moving exhibition, a media contest on the subject of flood protection, the winner of which will be announced at the conference (see p. 3). Furthermore, the Czech-German leisure guide "WasserKulturLandschaft Elbe" (*WaterCultureLandscape Elbe*), which follows into the traces and testimonials of the waterways, will also be presented at the conference.

The first conference day will be dedicated to these and many more LABEL results, as well as the collected experiences from the past ten years of transnational cooperation and joint flood protection. Participants from Germany, the Czech Republic, Poland, Hungary, as well as Austria will be discussing the aspects of both flood risk and emergency management and their adaptation to flood risks.

In a political forum on the second day of the conference, the Prime Minister of the Free State of Saxony, Stanislaw Tillich, will together with other political representatives, acknowledge and discuss the results and experiences of the joint activities and transnational cooperation in the last ten years, from a political perspective.

The conference is under the patronage of Dr. Matthias Röbller, President of the Saxon State Parliament.

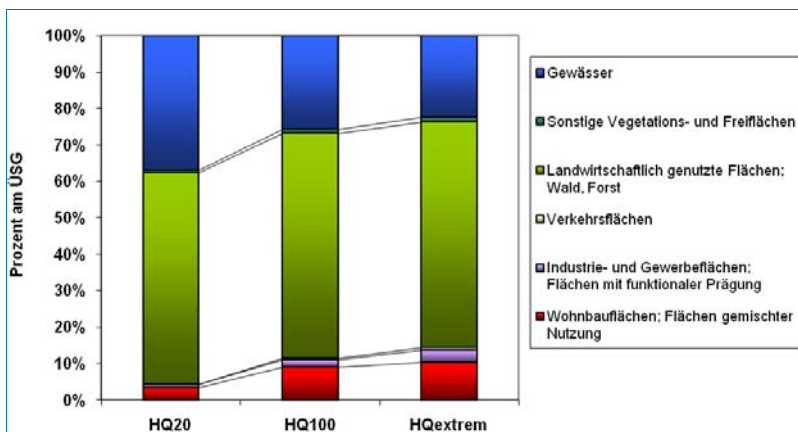


Images (from l.): INFRASTRUKTUR&UMWELT; Saxon State Parliament / Steffen Giersch

Further information: <http://www.label-eu.eu/de/veranstaltungen/abschlusskonferenz-dresden.html>

Responsible partner: Saxon State Ministry of the Interior (SMI), DE

Pilot use of interactive hazard maps for municipal flood protection in Berga/Elster



Hazardous situation in Berqa/Elster

© Fig. INGE - Saxon State Office for Environment, Agriculture and Geology (LfULG); Town Berga/Elster

The town of Berga/Elster with approx. 3,500 inhabitants lies in a valley on the White Elster River in the Elbe catchment area in Thuringia, Germany. With the support of the Thuringian Ministry for Agriculture, Forestry, Environment and Nature Conservation, Berga established itself as the first town in Thuringia to implement the municipal software system INGE. For this purpose, all historically documented flood events were combined with the existing database and findings of the planning for flood risk management.

The flooded area was evaluated in terms of the degree of hazard and then saved in the system. In this way, the endangered objects can be identified according to the water level and the required data can be retrieved. Unexpectedly, the largest risk determined was the failing of power supply faci-

ties. In coordination with the operator of the medium and low voltage network, a concept to minimise the impacts is currently being developed. The expert evaluation highlighted that apart from the White Elster, the Pöltzschbach, which flows in the White Elster in Berga, also had to be taken into consideration. The working process was presented by the representatives of the Thuringian Fire Brigade and Disaster Control College, who could give valuable advice on the further optimization of flood protection plans.

For 2012, a continuation of the pilot project is planned, so that the town of Berga/Elster can have further access to assistance on the assessment of the location, resource planning and the handling of flood events and INGE can be further tested and the experiences shared with other municipalities.

Responsible partner: Thuringian Ministry for Agriculture, Forestry, Environment and Nature Conservation, together with the town Berga/Elster and Fischer Engineering office, DE

Flood hazard and risk maps for river estuaries

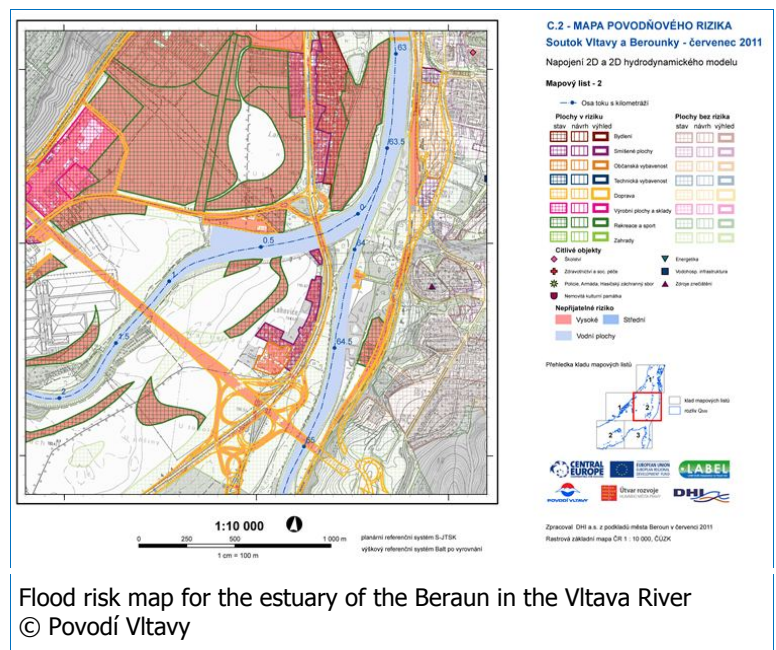
Within the framework of the LABEL project, the Czech State Water Authority in Povodí Vltavy is working on a pilot study concerning the creation of flood hazard maps and flood risk maps on estuaries for selected rivers. The problems related to confluences are very specific, as revealed during the integration of inhomogeneous data and mathematic models. For the calculation, the correct input of boundary conditions must be observed.

The result of this study is the recommended uniform approach to this problem, which will be used for the creation of flood hazard maps and flood risk maps in the Czech Republic.

These results will be published on the websites of the State Water Authority in Povodí Vltavy:

<http://www.pvl.cz/planovani-v-oblasti-vod/projekt-label>

Responsible partner: Povodí Vltavy, CZ



Final working group meeting in Hradec Kralove

The working group RISK met at Hradec Kralove for a last time.

The focus of the meeting was on the LABEL strategy LANE-ELBE 2012plus: the project partners agreed on main messages and individual recommendations. The future tasks for the Elbe river basin were also discussed. The joint strategy can now be presented at the final conference in June.

The working group leader, Matthias Grafe of the Saxon State Office for Environment, Agriculture and Geology (LfULG) thanked the members of the working group for the constructive cooperation and the invariably fruitful discussions! The members gained a lot from the exchange in the working group, not only for the project activities but also for the daily work in connection with flood risk management.

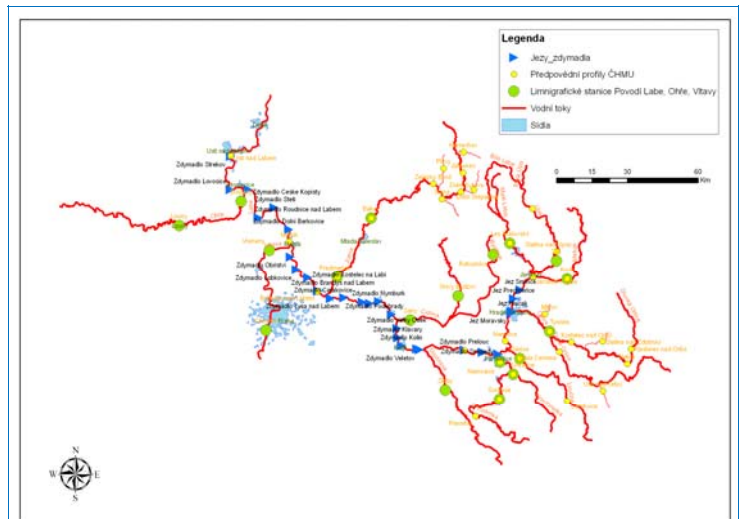
Responsible partner: Saxon State Office for Environment, Agriculture and Geology (LfULG), DE



Mathematical model for the simulation of hydrological conditions on the Elbe

Within the framework of the LABEL project, the Czech water authority Povodí Labe has developed a tool for the simulation of hydrological conditions, using experiences with past floods on the Elbe. The objective is to gain operational forecasts on the expected volume and course of the water level and of the flow rate for the Czech part of the Elbe in the event of flooding. The model covers the area from Opatovice nad Labem, weir (below Hradec Králové) to Hřensko at the state border. A river length of approximately 250 km is illustrated by using a combination of 1D, 1D+ models and 2D models. Input data are flow rate hydro-programmes in altitude profiles or lateral conditions, which are measured or projected by the model AQUA-LOG (which is made available by the Czech Institute for Hydrology). Output data of the model include the estimated course of the water level and the flow rate in individual sections of the river.

Responsible partner: Povodí Labe, CZ



Schematic map of source data for the catchment area
© Povodí Labe



Media contest on flood protection

Everyone can contribute to flood protection - with very little effort. Under the motto: "Alles im Fluss?" ("Everything in flow?") a public media contest was held.

The objective was to present to the public, with the use of media, one or several tips and modes of behaviour on flood protection in an exciting, creative and interesting manner. The contest ended on May 14, 2012 and the best contributions in the categories poster, film and creative will receive an award at the final conference on June 22, 2012 at the Saxon State Parliament.

Further information: <http://www.medienwettbewerb-hochwasserschutz.org/>

Responsible partner: Saxon State Office for Environment, Agriculture and Geology (LfULG), DE



LABEL - Headlines

LABEL at the asparagus festival in Central Bohemia — May 5, 2012, Marina Nelahozeves!

In LABEL the district of Central Bohemia had looked for suitable areas for further flood secure marinas; the "Nelahozeves Marina" was a shining example for this. On May 5, 2012, an asparagus festival was celebrated at the "Nelahozeves Marina". LABEL had a stand at the asparagus festival and was actively promoting the flood-adapted development of the water tourism in the region!

Project results introduced at the Elbe conference in Prague

On February 7, 2012, the second international Elbe conference was held in Prague, sponsored by the Czech Ministry of Environment. Almost 90 participants from the fields of public administration, politics and the private sector used the opportunity to exchange information on LABEL project results from the areas of flood risk management, river navigation and water tourism.



LABEL at a glance

Lead Partner:

Saxon State Ministry of the Interior

Duration:

09/2008 – 08/2012

Total budget:

4.215.680 €

thereof:

EFRE (EU Fördermittel):
3.317.246 €

Nationale Kofinanzierung:
898.434 €

www.label-eu.eu

CONTACT

Saxon State Ministry of the Interior:

Wilhelm-Buck-Str. 2
D-01095 Dresden

Dr. Fritz Schnabel
Dipl.-Ing. Andreas Kühl

Tel.: +49 (0)351 / 564-3456
Fax: +49 (0)351 / 564-3459
Mail: regionalentwicklung-eu@smi.sachsen.de

External Coordination:

INFRASTRUKTUR & UMWELT
Professor Böhm und Partner
Julius-Reiber-Str. 17
D-64293 Darmstadt

Dr. Peter Heiland
Dipl.-Geogr. Stefanie Greis

Tel.: +49 (0)6151 / 8130-0
Fax: +49 (0)6151 / 8130-20
Mail: label@iu-info.de

INFRASTRUKTUR & UMWELT
Professor Böhm und Partner

LABEL Partnership

Germany

Lead Partner: Saxon State Ministry of the Interior
PP 2: Ministry of State Development and Transport, Saxony-Anhalt

PP 3: Thuringian Ministry of Agriculture, Forestry, Environment and Nature Preservation

PP 4: Saxon State Ministry of the Environment and Agriculture

PP 5: Saxon State Office for Environment, Agriculture and Geology

PP 6: County of Ludwigslust-Parchim

PP 7: German Federal Institute for Hydrology

PP 8: Association for Housing, Urban and Spatial Development e.V.

Czech Republic

PP 9: Ministry of the Environment

PP 10: Ústí Region

PP 11: Region of South Bohemia

PP 12: Pilsen Region

PP 13: Hradec Králové Region

PP 14: Central Bohemia Region

PP 15: Liberec Region

PP 16: Pardubice Region

PP 17: Elbe River Basin Authority

PP 18: Vltava River Basin Authority

Austria

PP 19: Federal Ministry of Agriculture, Forestry, Environment and Water Management

Hungary

PP 20: Middle-Tisza district Environment and Water Directorate

